

LexSWITCH EV6 PUV



(CLASS 2)

● Model Name: Lex-HS6606 ●



Dimension (mm):
5995*1900*2800

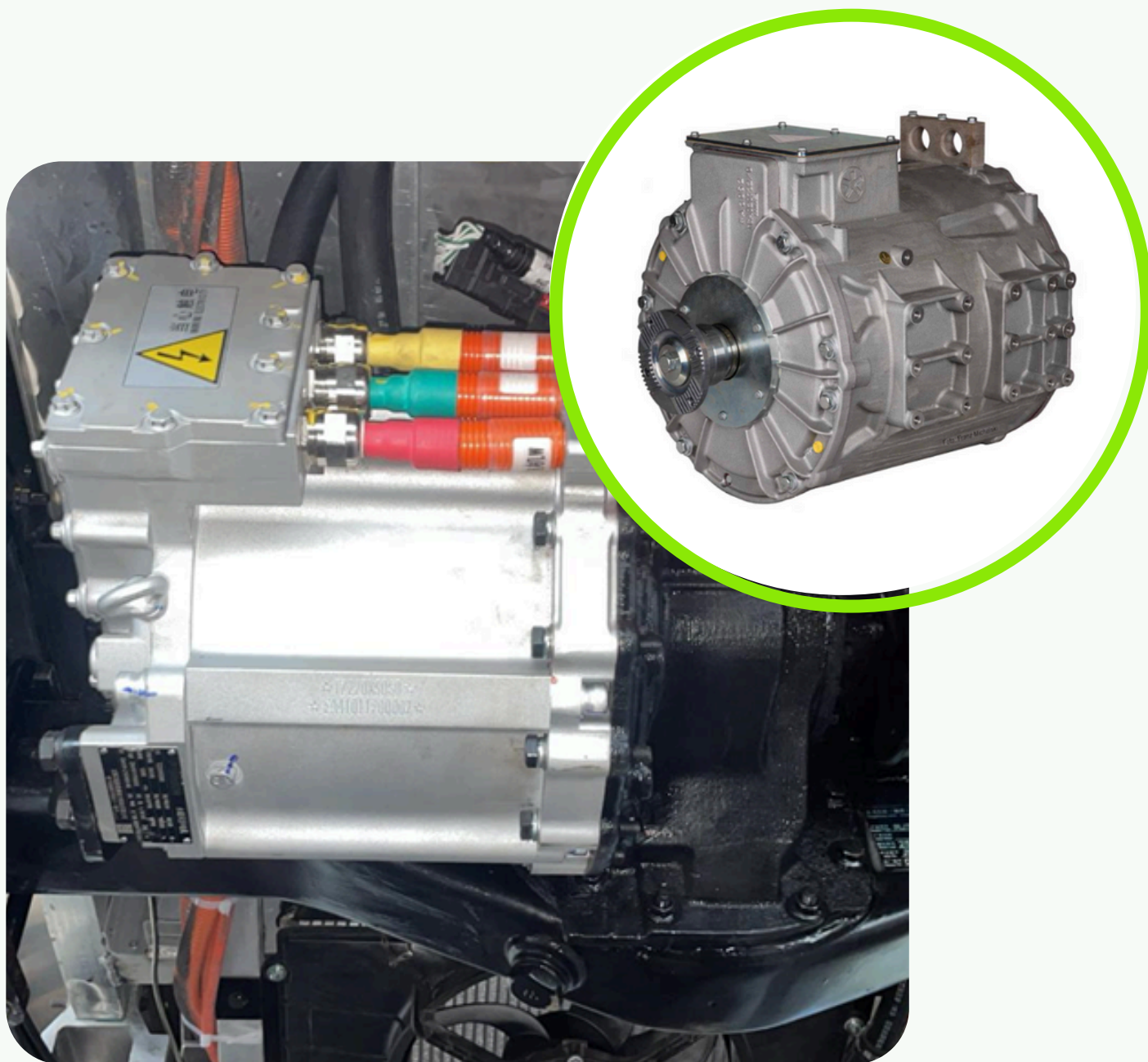


LEFT-HAND DRIVE



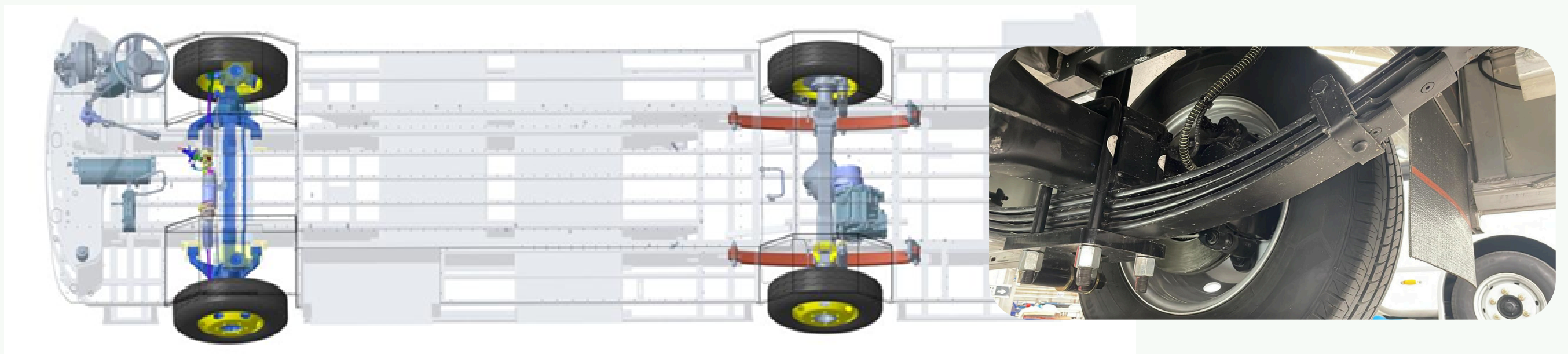
Vehicle Type:
Battery Electric Vehicle (BEV)

Gross Vehicle Weight:
4,800 kg



Inovance TZ210 electric motor has a power range of 60-120kW, operating at the torque between 290-480V. Besides that, it **can travel up to 200km** with AirCon ON and in a full load passengers condition

Leaf Spring Suspension



Front Axle:

2.0 ton axle with Disc Brake



Rear Axle:

2.8 ton axle with Disc Brake



Tires:

225/75R16C



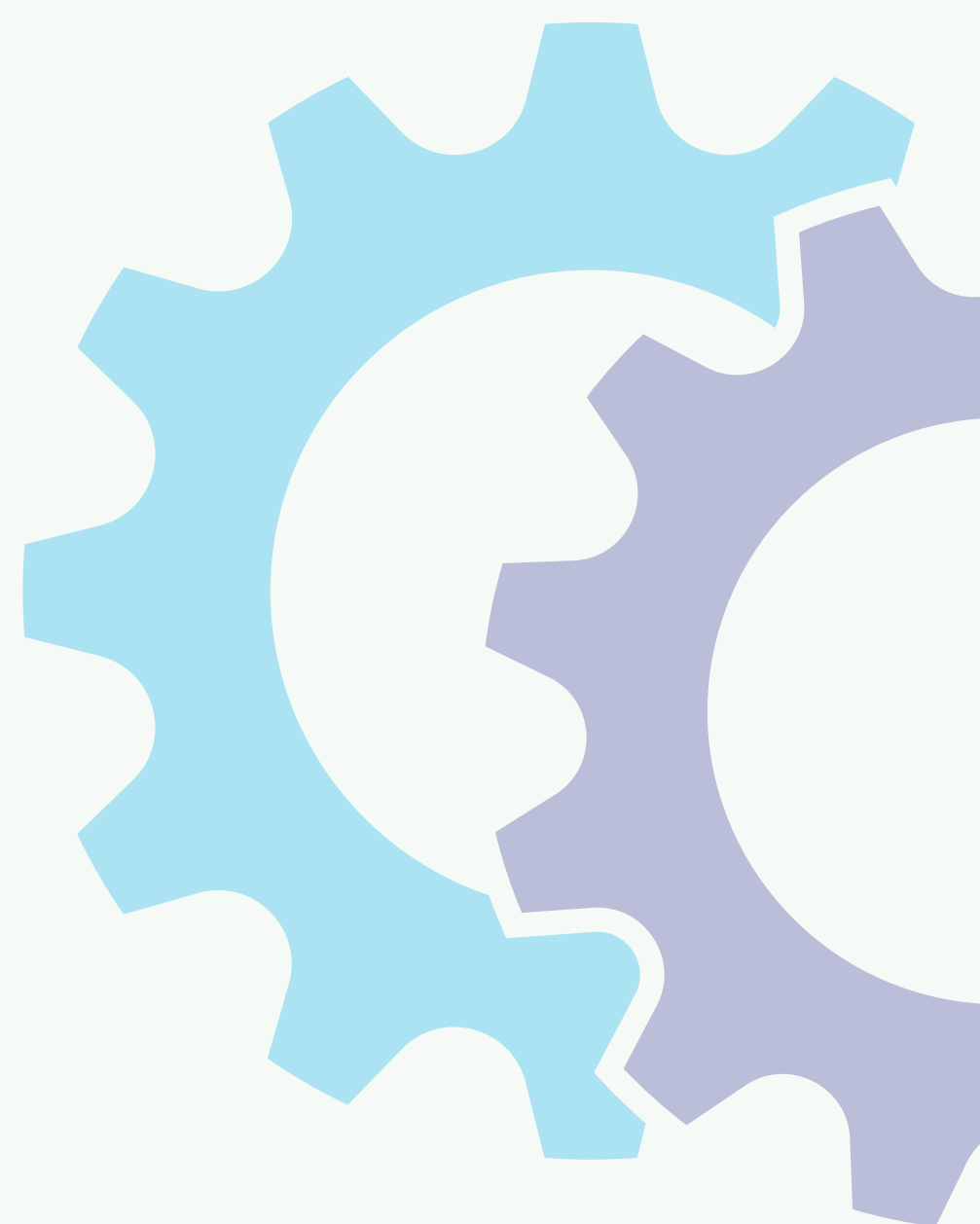
Hand Brake:

Electronic type, Cable assists



Brake System:

Hydraulic Brake (Regenerative Braking)





With a full aluminum monocoque body frame, we achieve a **40% reduction in weight** and **corrosion-free durability**. Our warranty extends up to 10 years, reflecting our high confidence in the material aspect.

With Weight Optimization



Consume less energy



Improved maneuverability



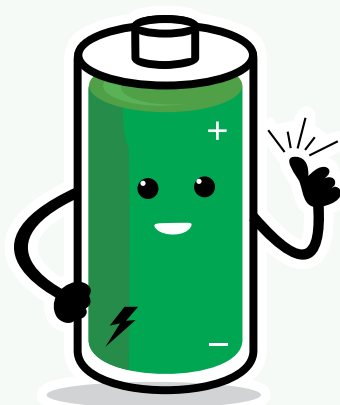
Incur lower maintenance costs



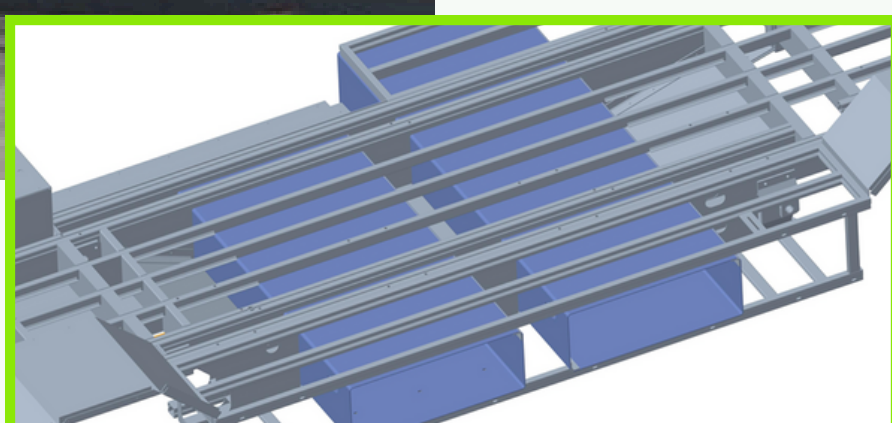
Designed in **Singapore**



Assembled in our plant in **China**



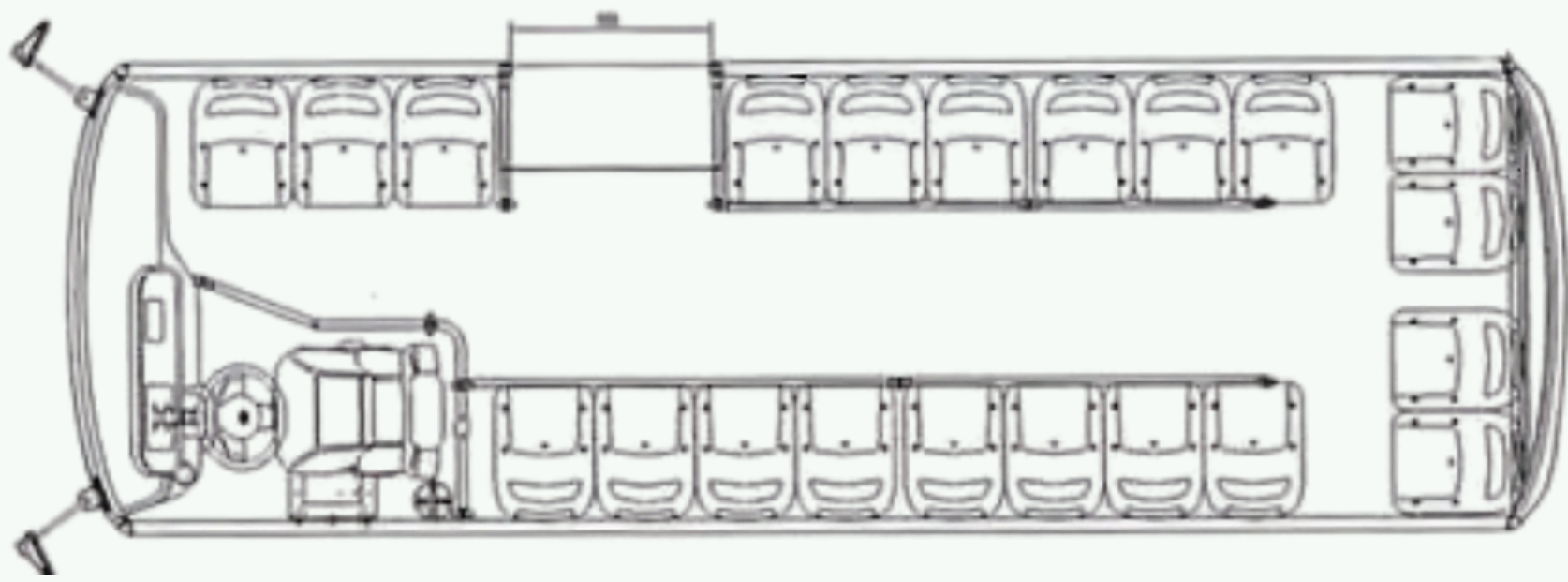
70.19kWh



The vehicle delivers outstanding performance using a **Lithium-Ion Battery**, featuring a **co-owned developed BMS and ECU**. It provides an optimal range with a **70kWh battery capacity** and includes a **7kWh slow charger onboard** as a backup. The **fast charging** capability allows the battery to **reach 100% in < 90 minutes**.



LexSWITCH™



22+9

Customizing the seat arrangement by maximizing the seating capacity with 9 standee to fulfil customer's needs.



Revolutionize your fleet with LexSWITCH AFCS and Monitoring System



LexSWITCH Lex-HS6606 PUV Class 2 also equipped with NTC Aircon which the size is smaller, excellent noise reduction and consumes significantly less power, enhancing overall energy efficiency and sustainability.



The electric folding door of the bus is designed to provide convenient access for passengers while ensuring safety and efficiency during boarding and alighting.

EXCLUSIVE

Motor Vehicle Classification

M2

Gross Vehicle Weight

< 5000 kgs



LexSWITCH Lex-HS6606

The only Government-Listed EV Bus in Philippines (M2 Classification)

Officially released on February, 2025 at evindustry.ph



LexSWITCH EcoMobility Inc.

Address:

24th Floor the Philippines Stock Exchange Tower, One Bonifacio High Street 5th Ave, corner 28th street, Fort Bonifacio, Bonifacio Global City, Taguig City

Contact Details

NC Cho

(Country Manager)

✉ nccho@lexswitch.com.sg

Hezekiah Alis

(Marketing Executive)

✉ hezekiah@LexSWITCH.com.sg

☎ +63 956 537 4938

